

### Polypropylène sièges BISTRO et FLIP M3



Blanc



Lavande



Terracotta



Gris clair 428C



Noir

### Polypropylène sièges INES M4 (assises et dossiers)



Blanc



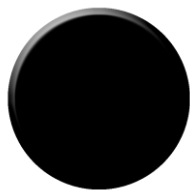
Rouge translucide



Violet translucide



Orange



Noir

### Polypropylène chaises VANOISE M2 et chaises AUVERGNE M2



Gris clair 428C



Rouge



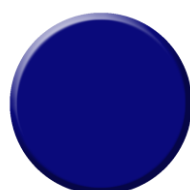
Beige  
Disponibile en M4



Anthracite



Moka



Bleu Navy



Bordeaux  
Disponibile en M4

### Polypropylène chaises NOMADE M2



Vert pistache



Beige

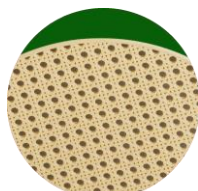


Gris clair 428C



Noir

### Polypropylène sièges BISTRO M4



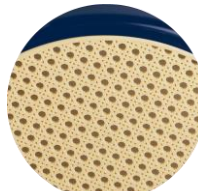
Vert garden



Gris anthracite



Blanc



Bleu marine



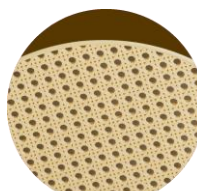
Bordeaux



Blanc unicolore



Noir



Marron brun rouille

# TEINTES EPOXY



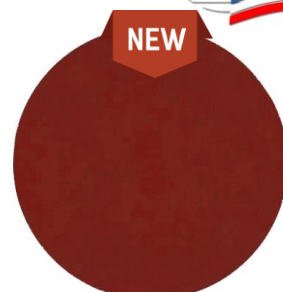
**Blanc coton\***  
**BG**



**Muscade\***  
**MU**



**Marron brun givré\***  
**MG**



**Piment\***  
**PI**



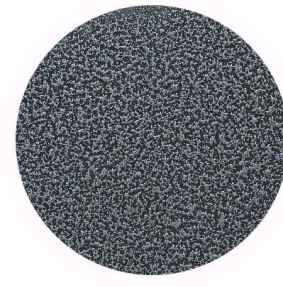
**Gris argile\***  
**GA**



**Gris argent**  
**GT**



**Anthracite janvier\***  
**AJ**



**Gris martelé**  
**GM**



**Verveine\***  
**VV**



**Miel\***  
**MI**



**Orange ral 2004\***  
**OR**



**Cactus\***  
**CT**



**Bleu acapulco\***  
**BO**



**Violet purple**  
**VP**

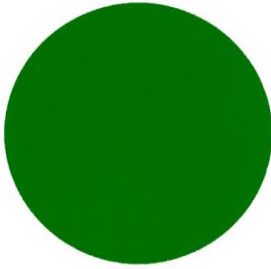


**Carbone\***  
**CA**

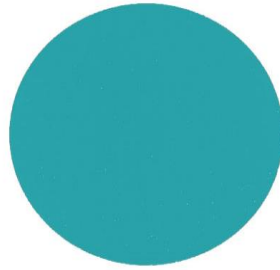


**Noir ral 9005\***  
**NR**

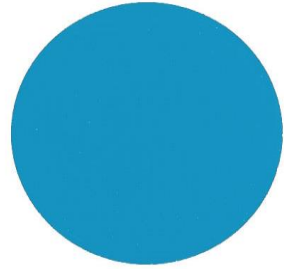
# TEINTES EPOXY



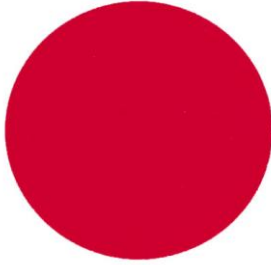
**Vert ral 6029\***  
**VE**



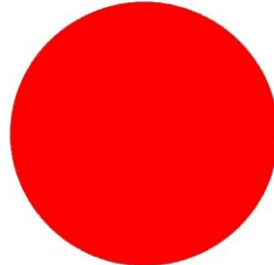
**Bleu turquoise ral 5018**  
**VU**



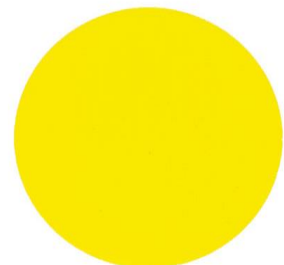
**Bleu ciel ral 5015**  
**BI**



**Rouge ral 3000**  
**RG**



**Rouge ral 3020**  
**RE**



**Jaune ral 1023**  
**JA**

\*Qualité polyester Architecture, ALESTA AP  
Grâce à leurs excellentes performances  
mécaniques ces peintures peuvent être utilisées  
sur supports métalliques pour architecture  
intérieure ou extérieure