



TEINTES BOIS



**Blanc pastel
BP**



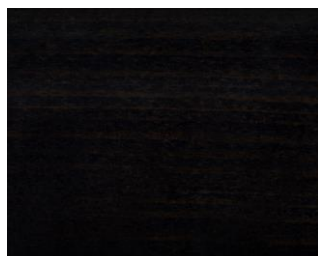
**Hêtre naturel
NA**



**Teck rosé
TK**



**Gris
GR**



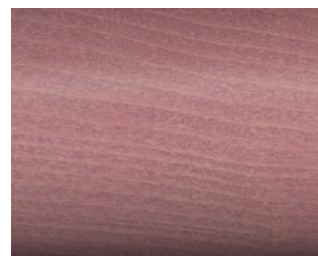
**Noir ébène
NE**



**Wengé
WG**



**Cappuccino
CP**



**Rose pétale
RP**



**Carambole
CA**



**Jaune canari
JR**



**Orange
ON**



**Rouge chinois
RC**



**Bleu lagon
BG**



**Bleu pacifique
PA**

TEINTES TISSUS

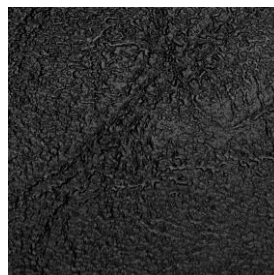
Les thermo-soudés AGNEAU M1



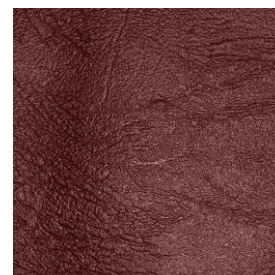
**Rouge
ARG**



**Blanc
ABC**



**Noir
ANR**



**Bordeaux
ABO**

Les thermo-soudés DAIM M2



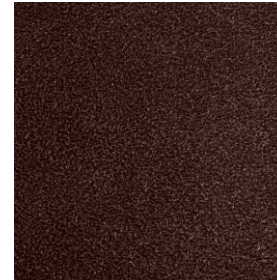
**Gris galet
DGG**



**Beige
DBE**



**Lavande
DLA**

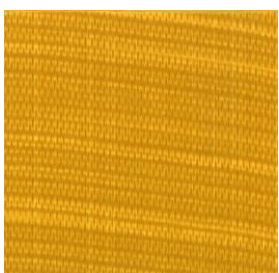


**Café
DCF**

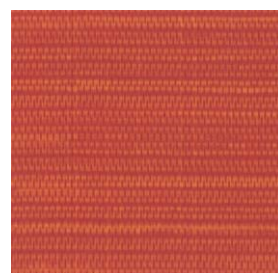
Les agrafés ABAKA M2



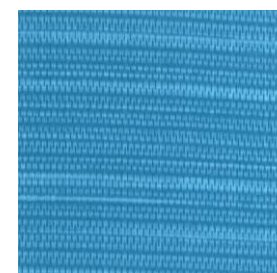
**Kiwi
AKI**



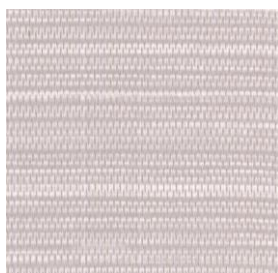
**Safran
ASA**



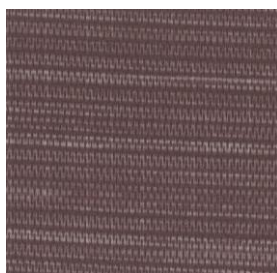
**Piment
API**



**Curacao
ACU**



**Grège
AGR**



**Chocolat
ACH**

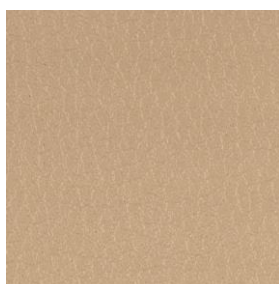


**Anthracite
AAN**

Les agrafés GINGKO M1



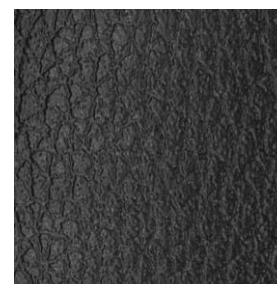
**Granny
GGY**



**Dune
GDU**

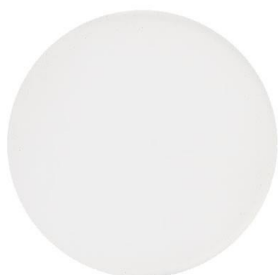


**Groseille
GGR**



**Anthracite
GAN**

TEINTES EPOXY



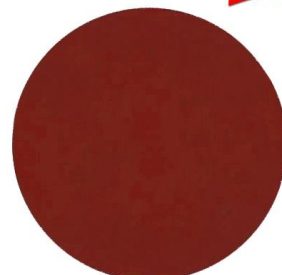
Blanc coton*
BG



Muscade*
MU



Marron brun givré*
MG



Piment*
PI



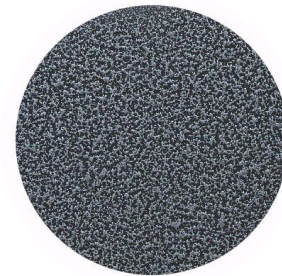
Gris argile*
GA



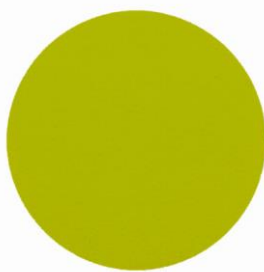
Gris argent
GT



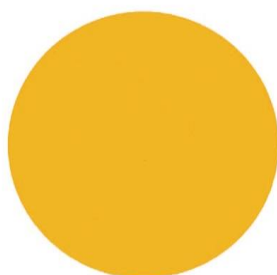
Anthracite janvier*
AJ



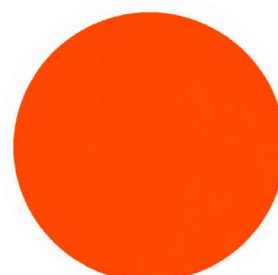
Gris martelé
GM



Vert granny
YY



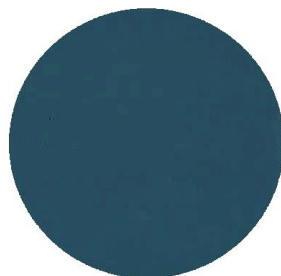
Miel*
MI



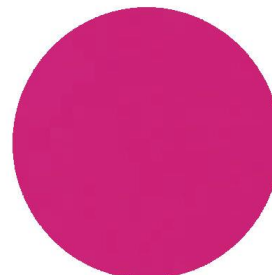
Orange ral 2004*
OR



Cactus*
CT



Bleu acapulco*
BO



Violet purple*
VP

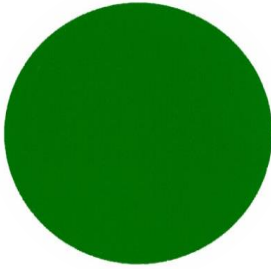


Carbone*
CA

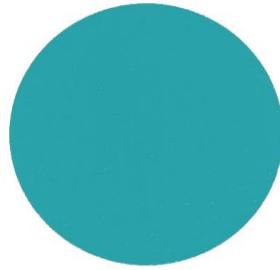


Noir ral 9005*
NR

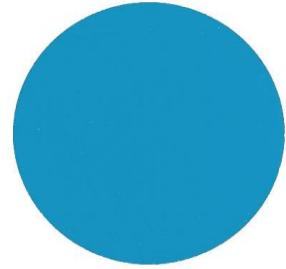
TEINTES EPOXY



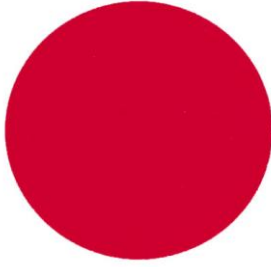
Vert ral 6029*
VE



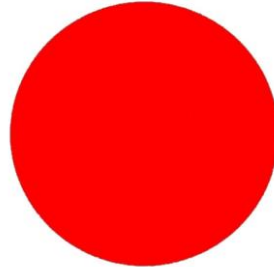
Bleu turquoise ral 5018*
VU



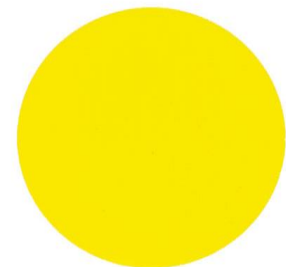
Bleu ciel ral 5015*
BI



Rouge ral 3000*
RG



Rouge ral 3020*
RE



Jaune ral 1023
JA

*Qualité polyester Architecture, ALESTA AP
Grâce à leurs excellentes performances
mécaniques ces peintures peuvent être utilisées
sur supports métalliques pour architecture
intérieure ou extérieure