



# TEINTES BOIS



**Blanc pastel  
BP**



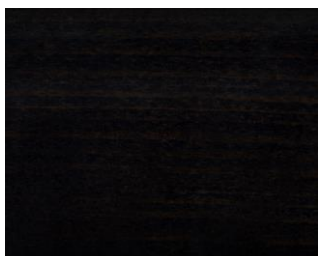
**Hêtre naturel  
NA**



**Teck rosé  
TK**



**Gris  
GR**



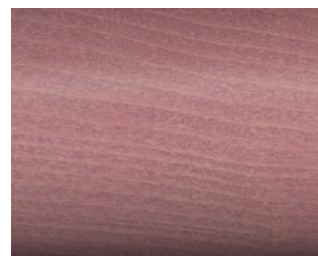
**Noir ébène  
NE**



**Wengé  
WG**



**Cappuccino  
CP**



**Rose pétale  
RP**



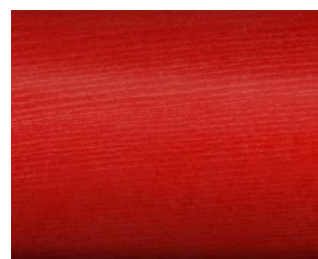
**Carambole  
CA**



**Jaune canari  
JR**



**Orange  
ON**



**Rouge chinois  
RC**

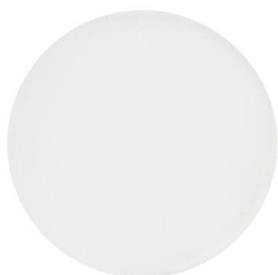


**Bleu lagon  
BG**



**Bleu pacifique  
PA**

# TEINTES EPOXY



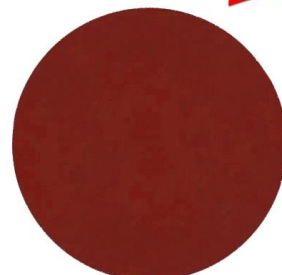
**Blanc coton\***  
**BG**



**Muscade\***  
**MU**



**Marron brun givré\***  
**MG**



**Piment\***  
**PI**



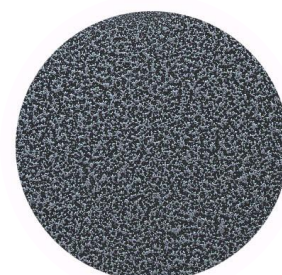
**Gris argile\***  
**GA**



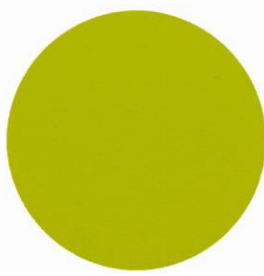
**Gris argent**  
**GT**



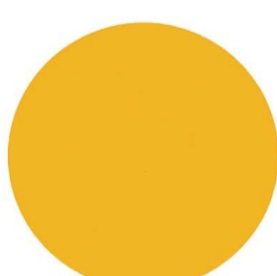
**Anthracite janvier\***  
**AJ**



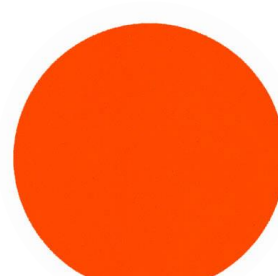
**Gris martelé**  
**GM**



**Vert granny**  
**YY**



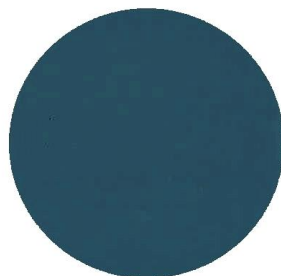
**Miel\***  
**MI**



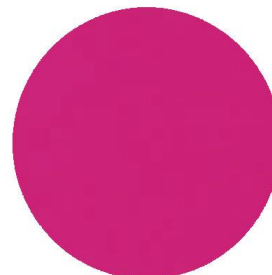
**Orange ral 2004\***  
**OR**



**Cactus\***  
**CT**



**Bleu acapulco\***  
**BO**



**Violet purple\***  
**VP**

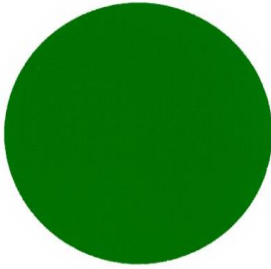


**Carbone\***  
**CA**

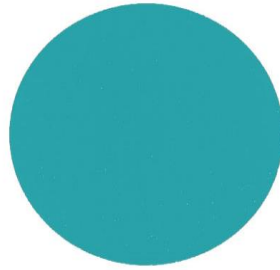


**Noir ral 9005\***  
**NR**

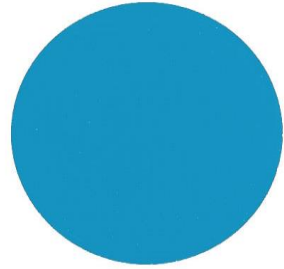
# TEINTES EPOXY



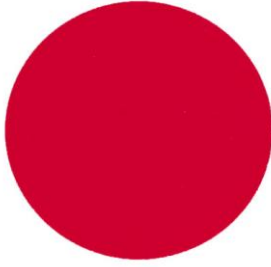
**Vert ral 6029\***  
**VE**



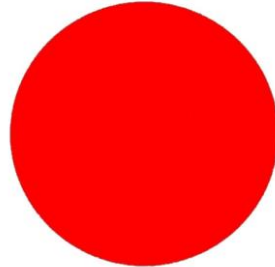
**Bleu turquoise ral 5018\***  
**VU**



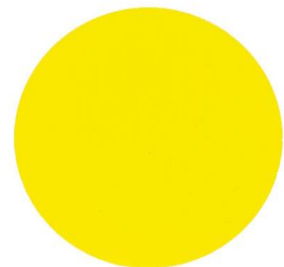
**Bleu ciel ral 5015\***  
**BI**



**Rouge ral 3000\***  
**RG**



**Rouge ral 3020\***  
**RE**



**Jaune ral 1023**  
**JA**

\*Qualité polyester Architecture, ALESTA AP  
Grâce à leurs excellentes performances  
mécaniques ces peintures peuvent être utilisées  
sur supports métalliques pour architecture  
intérieure ou extérieure